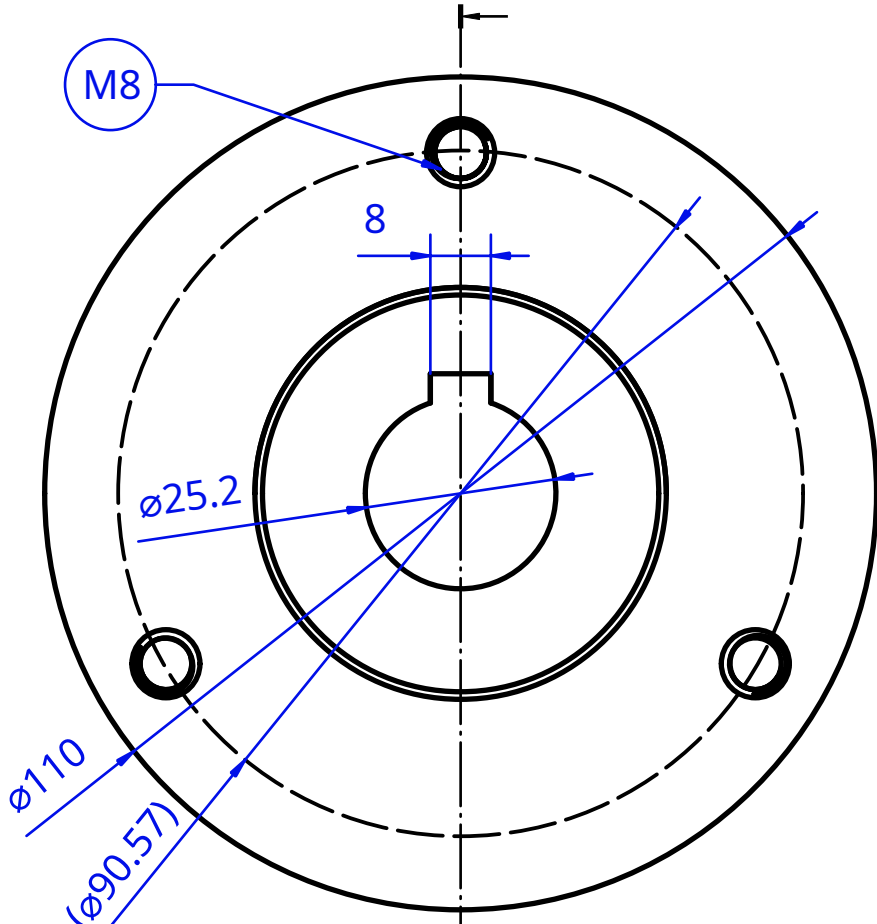
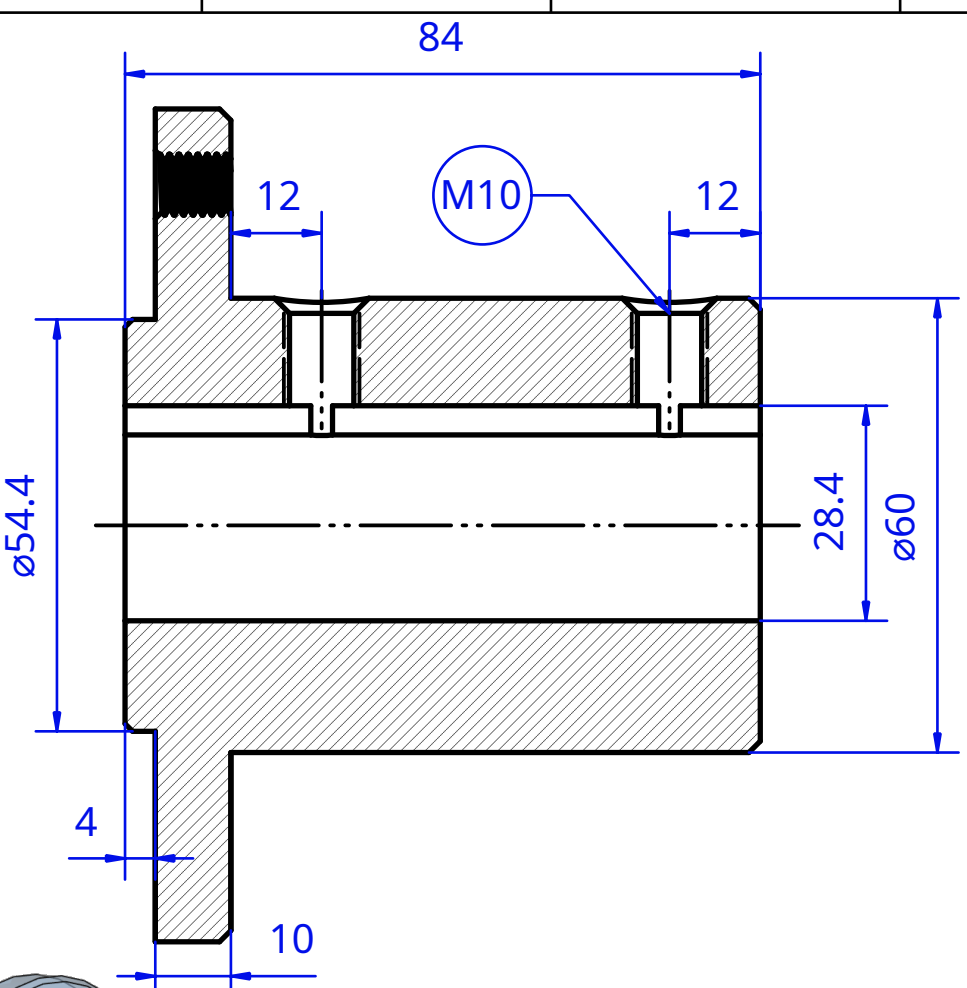
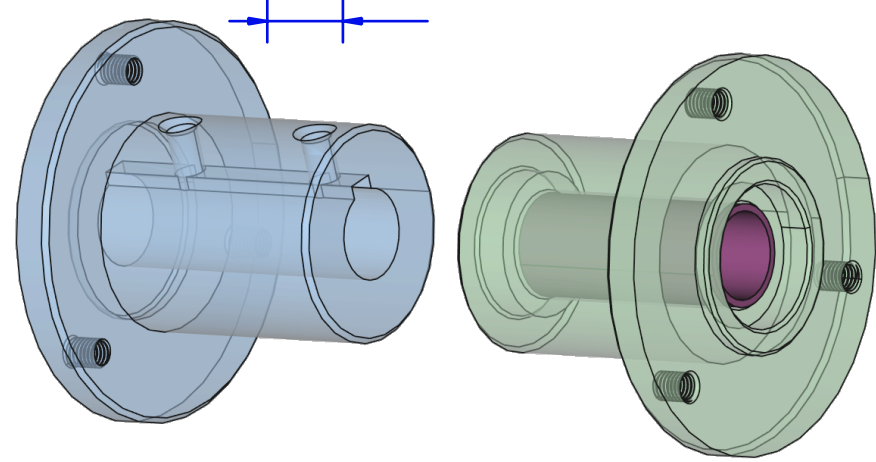



F E D C B A

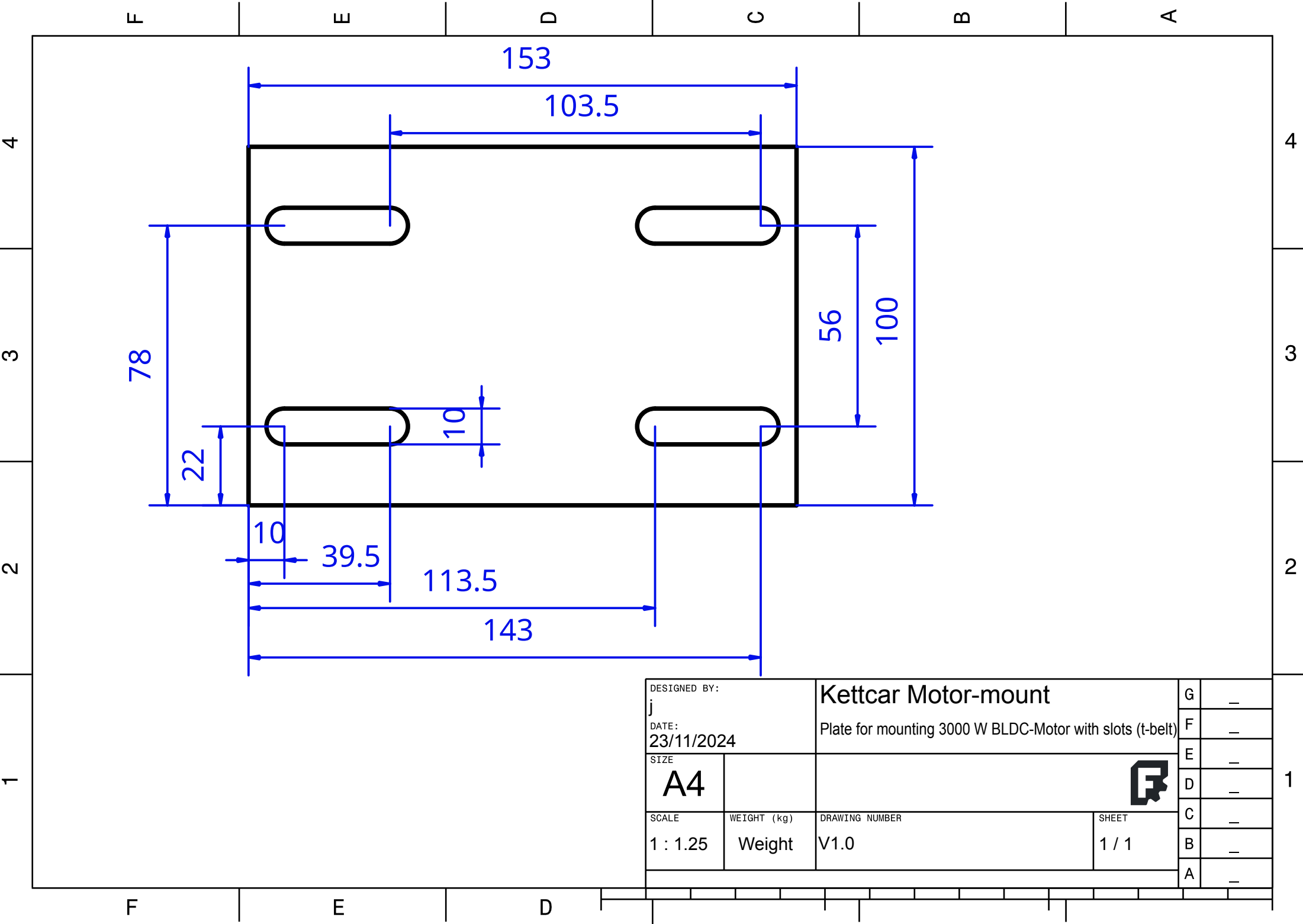



Note: M8 hole positions are not exact.  
-> mark and drill using the actual rim as template.



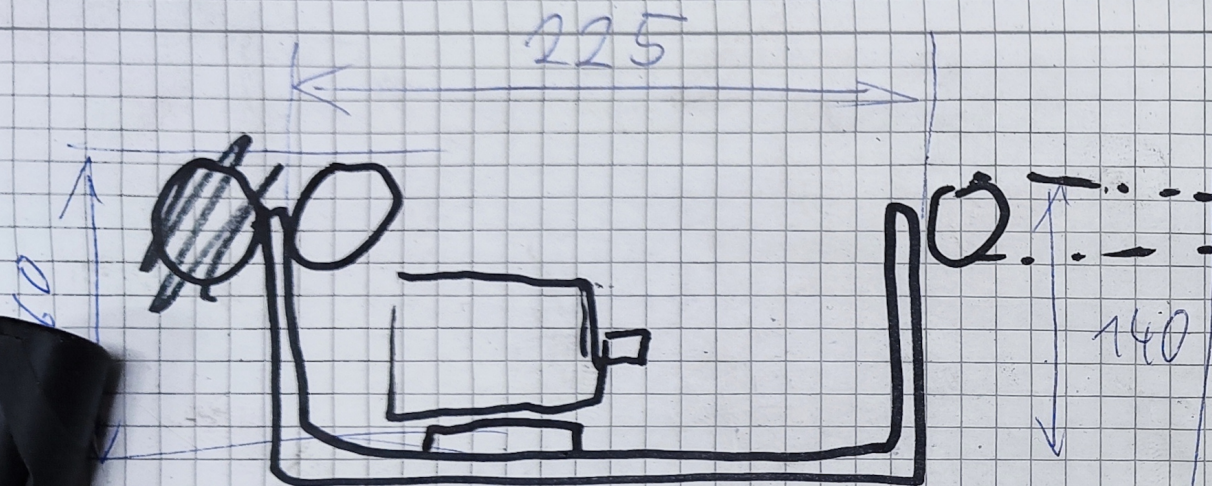
DESIGNED BY: j		Kettcar - left wheel hub (driven)  Keyed connection, fixed to axle with 8 mm key and screws		G	—			
DATE: 2024.11.08				F	—			
SIZE	<div>A4</div>	<div></div>		E	—			
				D	—			
SCALE				WEIGHT (kg)	DRAWING NUMBER	SHEET	C	—
1 : 1					V1.0	1 / 2	B	—
This drawing is our property; it can't be reproduced or communicated without our written consent.				A	—			

F E D

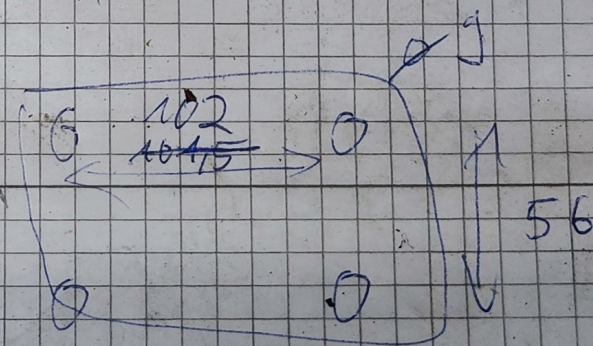
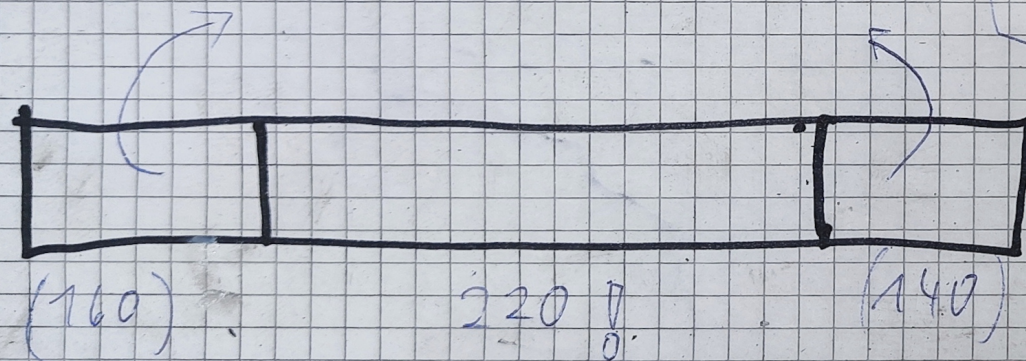
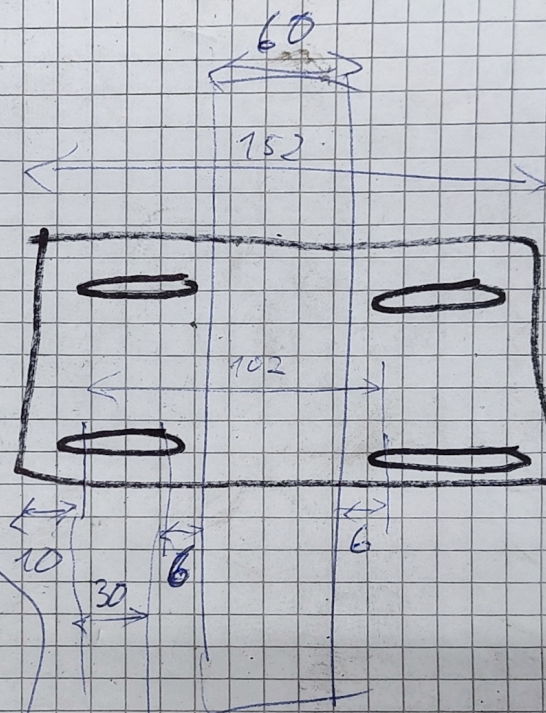


DESIGNED BY: j		Kettcar Motor-mount		G	—
DATE: 23/11/2024		Plate for mounting 3000 W BLDC-Motor with slots (t-belt)		F	—
SIZE	A4			E	—
				D	—
				C	—
SCALE	WEIGHT (kg)	DRAWING NUMBER	SHEET	B	—
1 : 1.25	Weight	V1.0	1 / 1	A	—

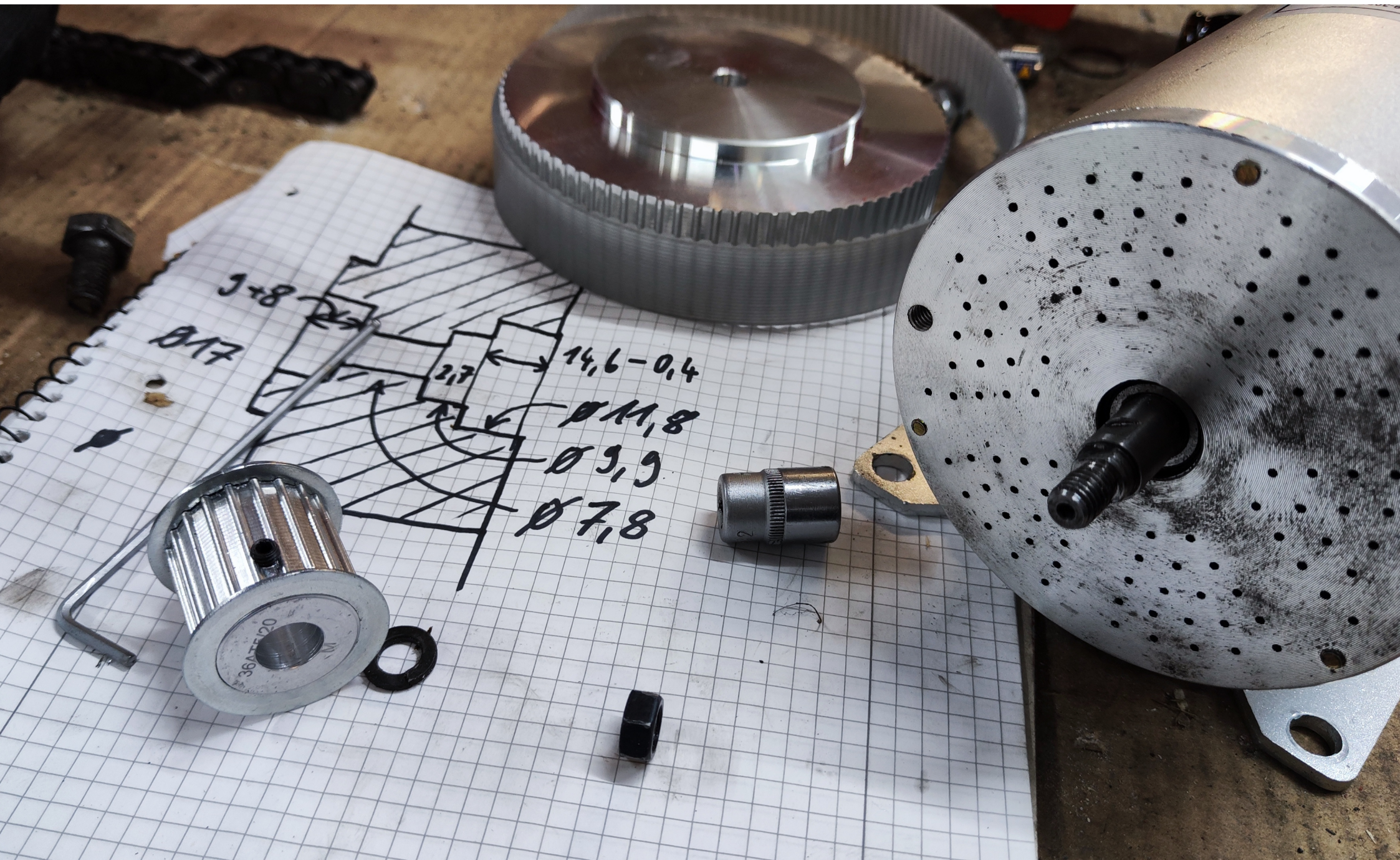




153 X 100 X 6

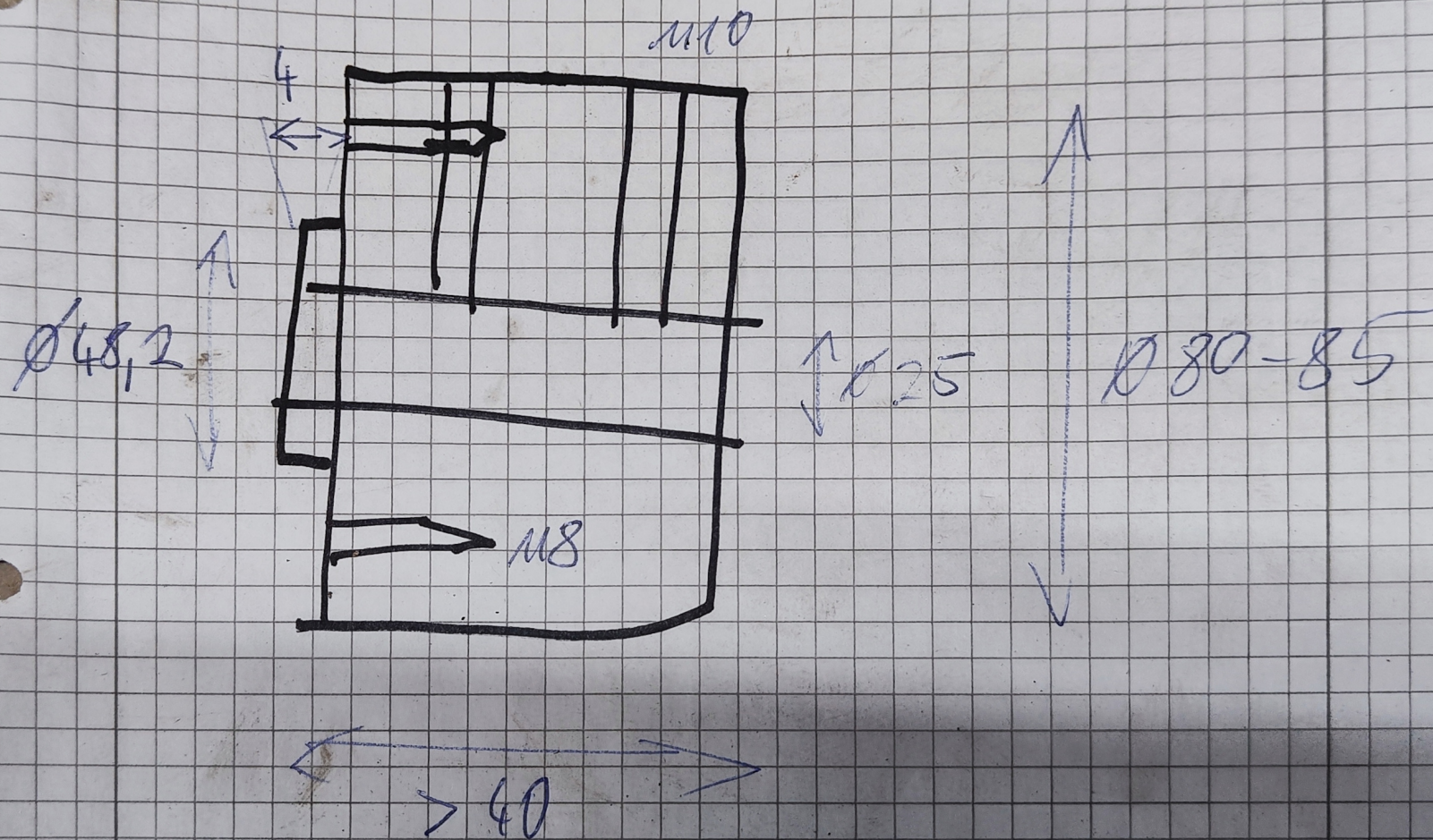




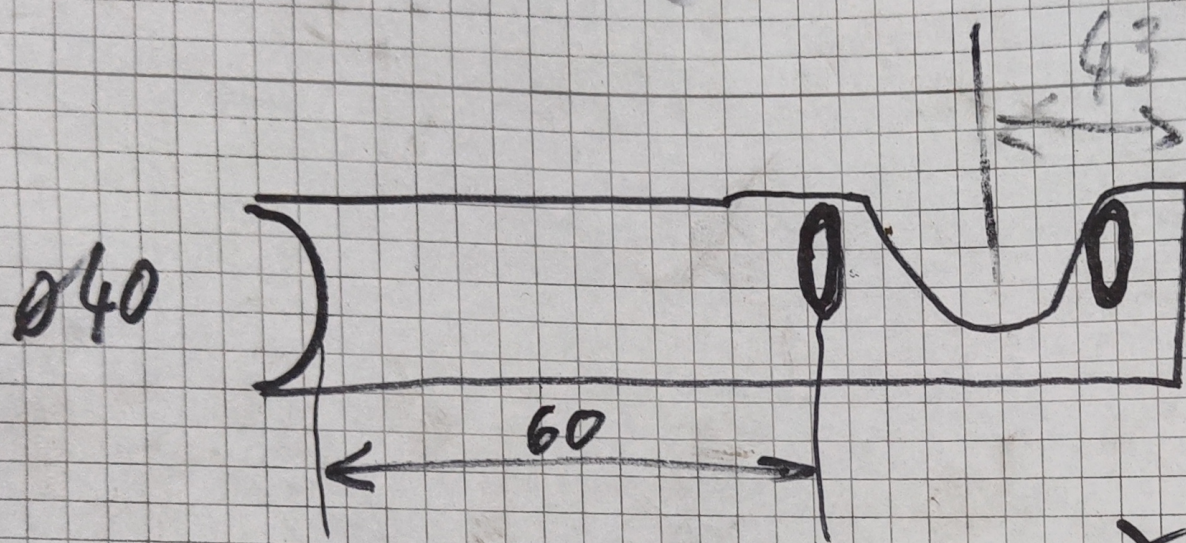




# Kettcar Bremscheibe







$$x \leftarrow 30x \quad 0x \cdot 15x$$

$$x \quad 222 \rightarrow 224 \quad 2 \quad y \uparrow 15x \quad 0x \quad \uparrow 20x$$

$$y \quad 242, 4 \uparrow 243, 8 \quad 1,4$$